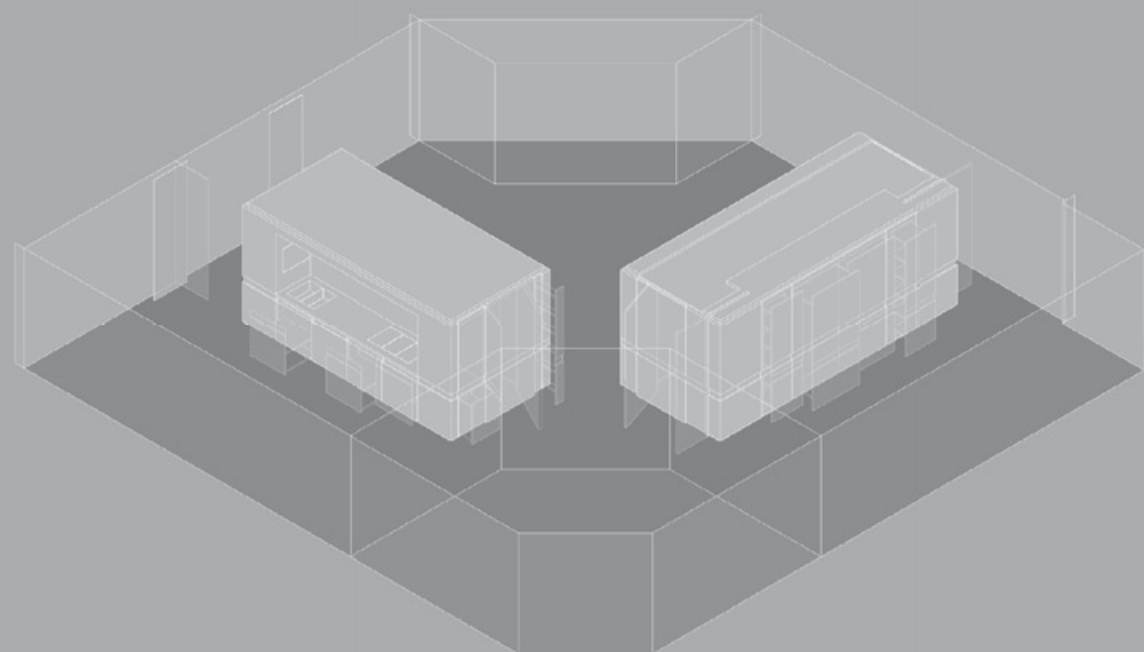




private house Rijkaart · Hoevelaken



The intervention has taken place in one of the houses of an experimental residential area built in the seventies. By removing all internal walls, the house gets an open floor plan. Two new aluminium volumes are placed in such a way that three discrete areas are created. The elements are designed down to the smallest detail to guarantee



the maintenance of all necessary service functions like kitchen, bathroom and closets. The use of contemporary materials like aluminium and glass to form a contrast to the existing brickwork walls and wooden roof is a conscious choice made out of respect for the existing context. In 2002 the bathroom received the Bathroom Design Award.



Credits

<i>Client</i>	Mr. en Mrs. Rijkaart · Hoevelaken
<i>Size</i>	200 m²
<i>Project architect</i>	Heike Löhmann
<i>Contributors</i>	Katja Dempers · Birgit Hannebrook · Arthur Galdeij
<i>Structural engineer</i>	Bouwadviesbureau STRACKEE · Amsterdam
<i>Contractor</i>	Koninklijke Woudenberg · Ameide
<i>Subcontractors</i>	Van den Brandhof bv · De Meern Betuwse Glasgroothandel · Tiel