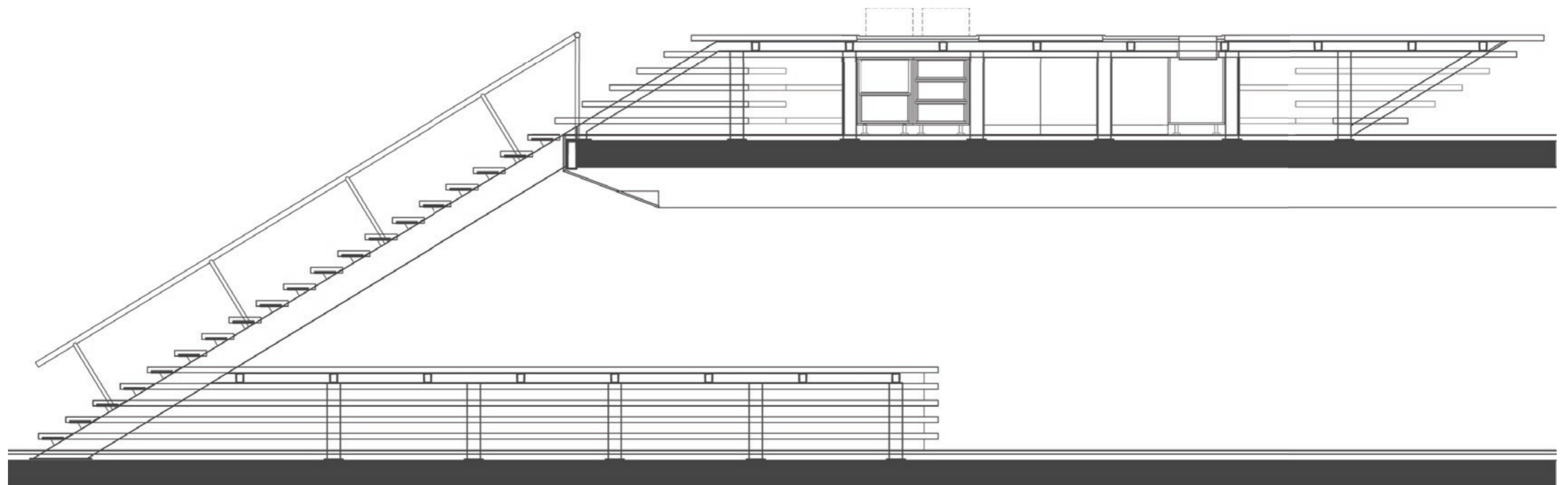


head office IMC · Amsterdam World Trade Centre





The new head office of IMC, an international trading company, accommodates the differing representatives of ICM's different departments: ICT support; various types of traders; the board of directors. The diverse mentalities of the departments demand a combination of different office concepts: from cell office to open-plan office; a dealing room for about 50 traders; a lounge club. On the two levels of altogether 2.000 square

meters, all departments are related by a few strong elements such as the especially-designed, highly finished closet walls.

The staircase-counter-bar, visible from the entrance, is the representative eye-catcher of the head office, bringing all the different departments together.

Credits

<i>Client</i>	IMC
<i>Size</i>	2.000 m ²
<i>Commission</i>	December 2002
<i>Project architect</i>	Heike Löhmann
<i>Contributors</i>	Anne Holtrop · Nolly Vos
<i>Project management</i>	IPMMC · Utrecht
<i>ICT consultant</i>	Footmark bv · Apeldoorn
<i>Installation consultant</i>	Ilex · Nieuwegein
<i>Contractor</i>	Visser en van Buren bv · Amsterdam
<i>Subcontractors</i>	Smeulders interieurgroep · Nuenen Wolter en Dros groep · Croon Van Hees elektrotechniek