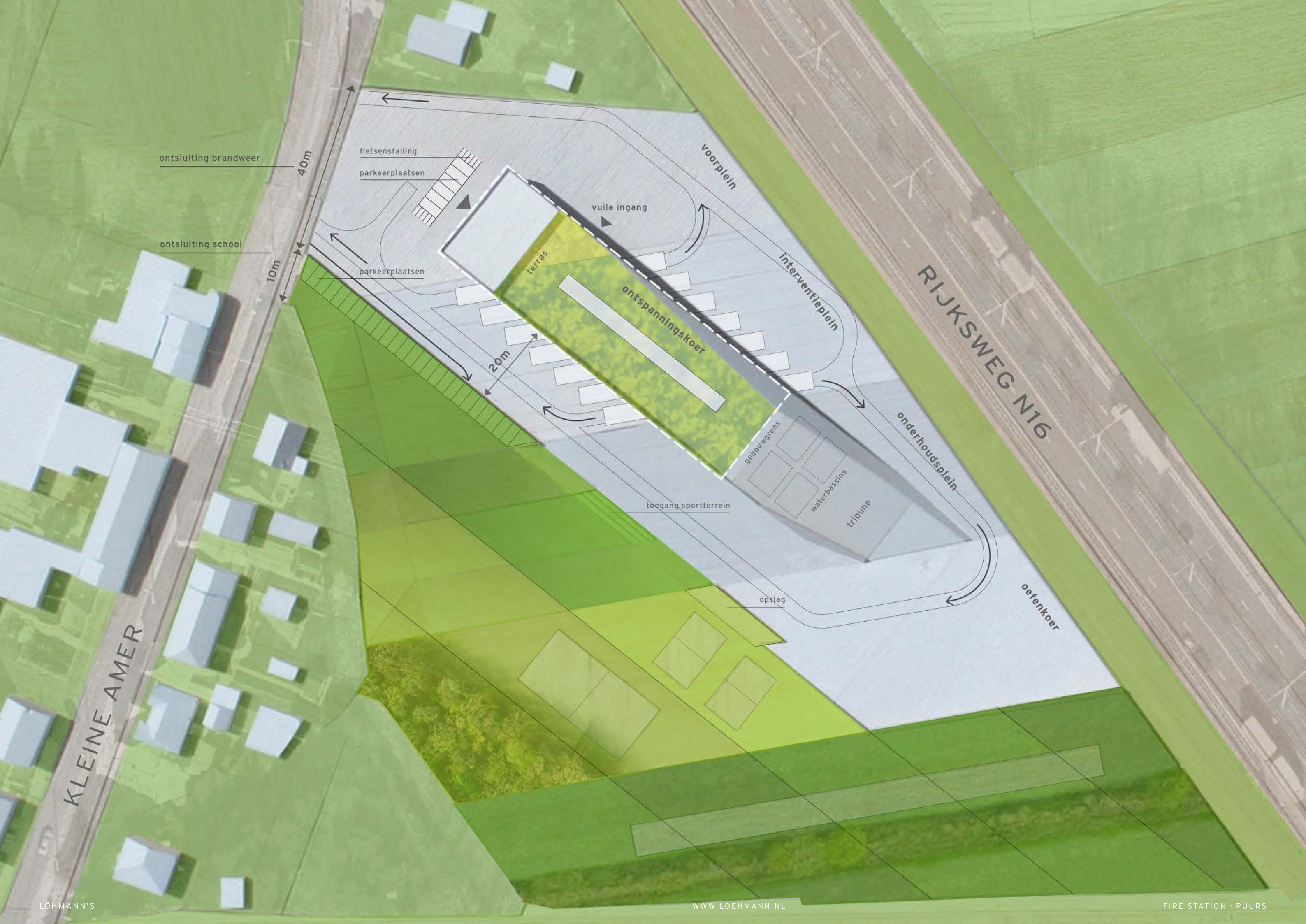


Fire Station • Puurs (BE)





ontsluiting brandweer

40m

fietsenstalling

parkeerplaatsen

vuile ingang

voorplein

ontsluiting school

10m

parkeerplaatsen

terras

ontspanningskoer

20m

interventieplein

RIJKSWEG N16

onderhoudsplein

toegang sportterrein

gebouwgrens

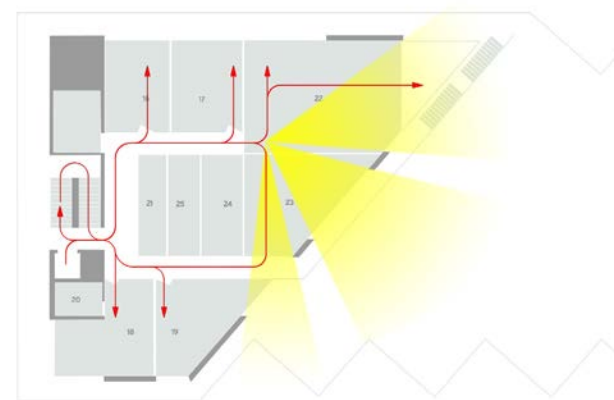
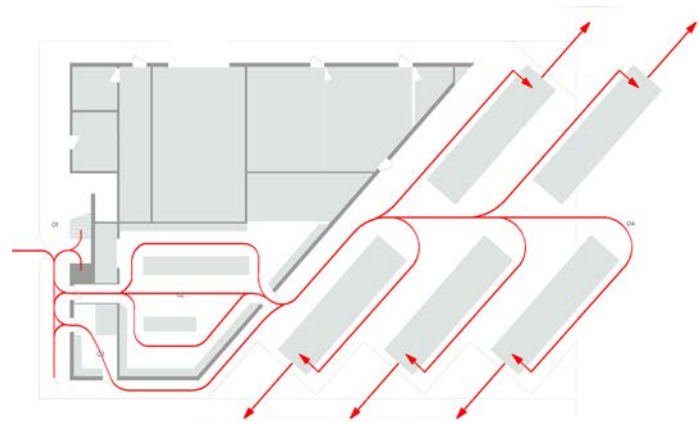
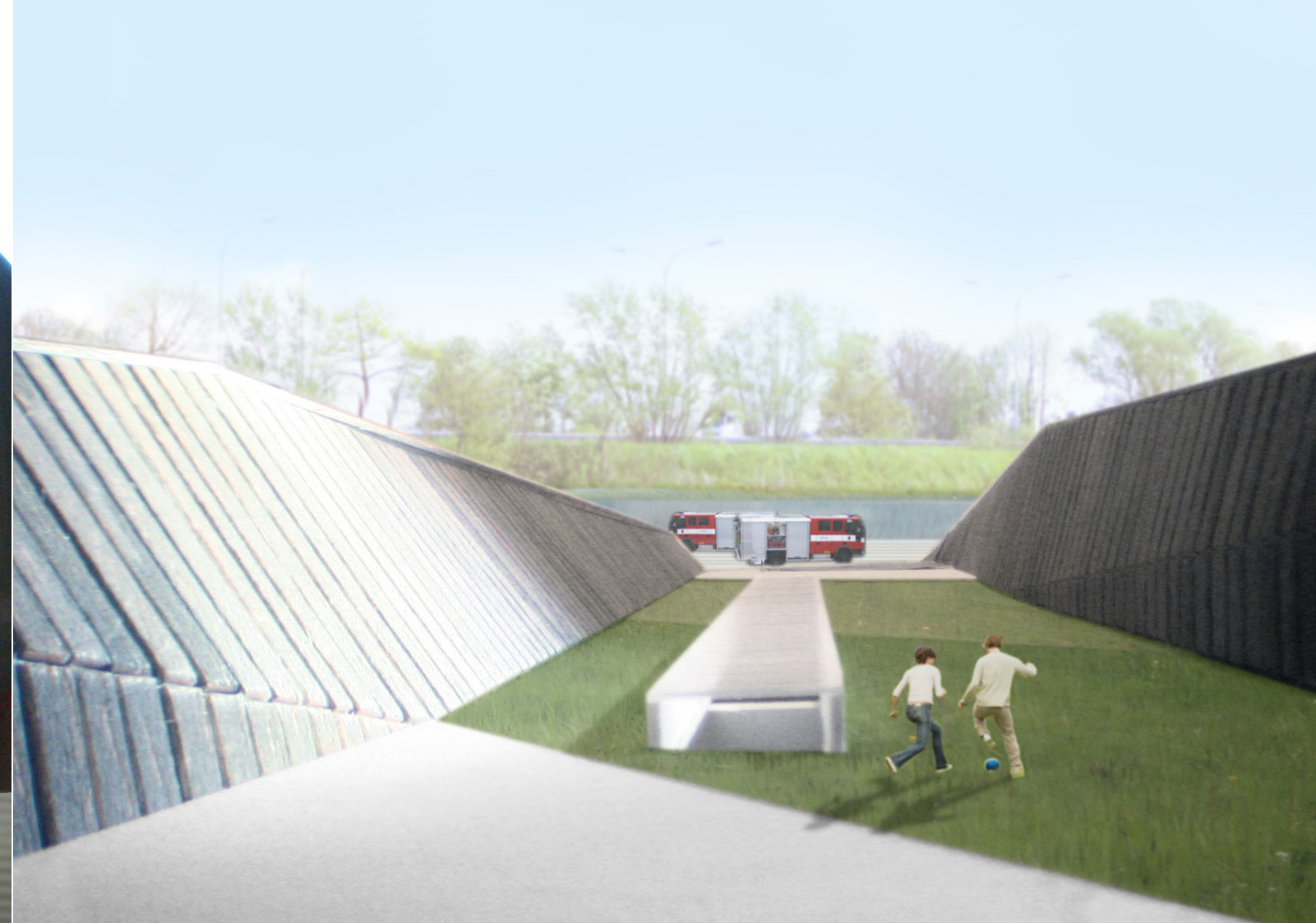
waterbassins

tribune

opslag

oefenkoer

KLEINE AMER



The building is carefully integrated into the characteristic landscape of Klein-Brabant, yet clearly recognisable as the fire station of Puurs. It thus reacts on the generic business parks along the N16 that seemingly lack any relationship with the landscape.

On the site, that will be shared with a - not yet designed - schoolyard, the fire station makes optimal use of the depth of the plot and the narrow entrance at the street side. The defining criterion for the layout of the building is the routing of the fire engines that need to be able to turn out as fast as possible.

To benefit logistics, the fire station is composed of two volumes, with a garage in between. On the second floor a roof garden can be entered, which extends to and merges with a stand towards a ground for training and demonstrations. Most of the site, which used to be green, needs to be paved for the heavy fire engines. The roof garden gives the site its green space back.

The efficiently organized building volume is clad in a sculptural shell of concrete elements, which are also used for the pavement, so that terrain and fire station merge into a continuous landscape. The forms of the walls are defined by their function as acoustic barrier against the adjacent highway.



Credits

The municipality of Puurs and the state architect of Flanders have selected the office out of an open call to which 150 offices had replied. Five offices were invited to present a design for the new station of the volunteer fire department of Puurs.

<i>Client</i>	Municipality of Puurs · Belgium
<i>Size</i>	1.600 m ²
<i>Project architect</i>	Heike Löhmann
<i>Collaborators</i>	Jasper van den Boogaard · Sanne van den Breemer · Caro van Dijk Arthur Galdeij · Joep Koenders
<i>Structural engineer</i>	Corsmit bv · Rijswijk
<i>Building services</i>	Hori bv · Zeist
<i>Cost accountant</i>	C2N bv · Zoetermeer

