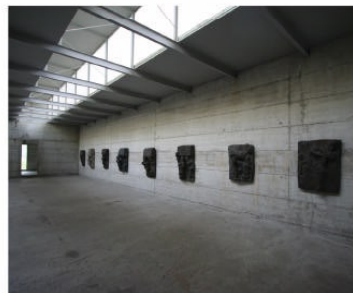
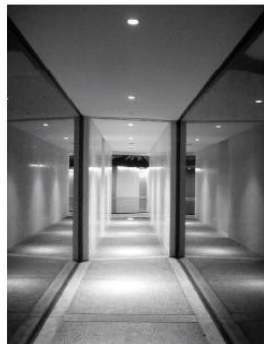
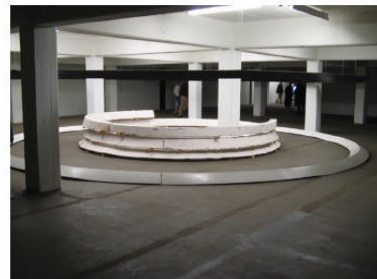
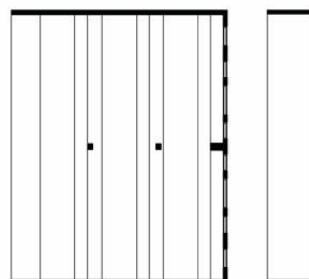
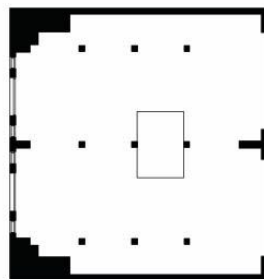
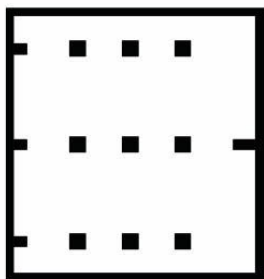


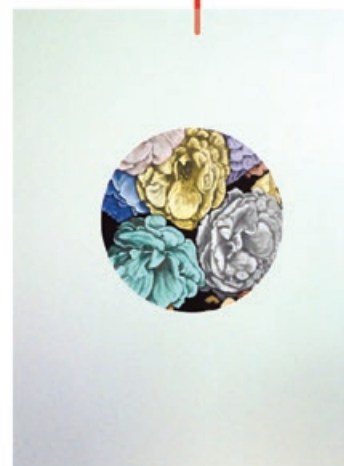
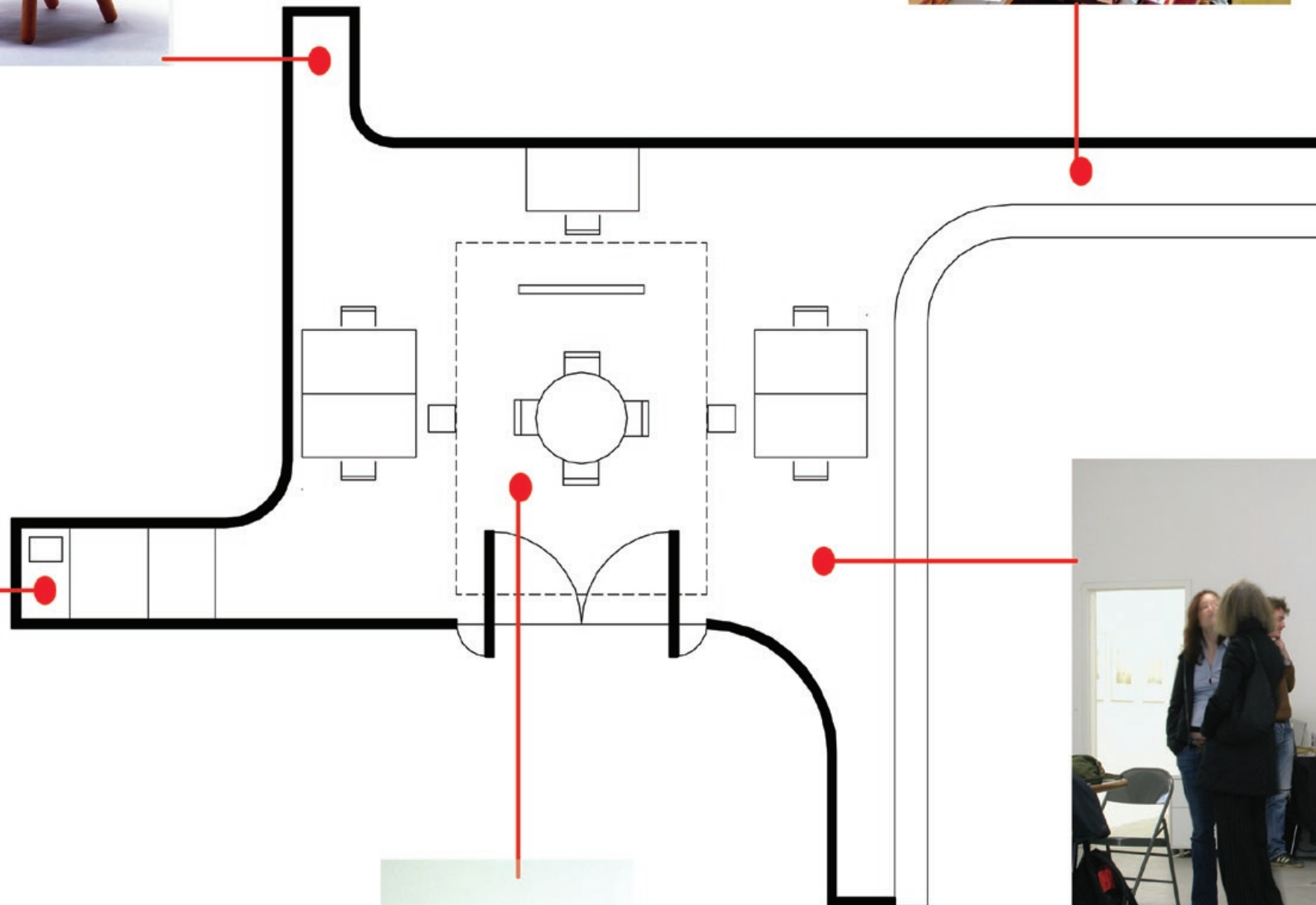
## Gallery Looiersgracht • Amsterdam

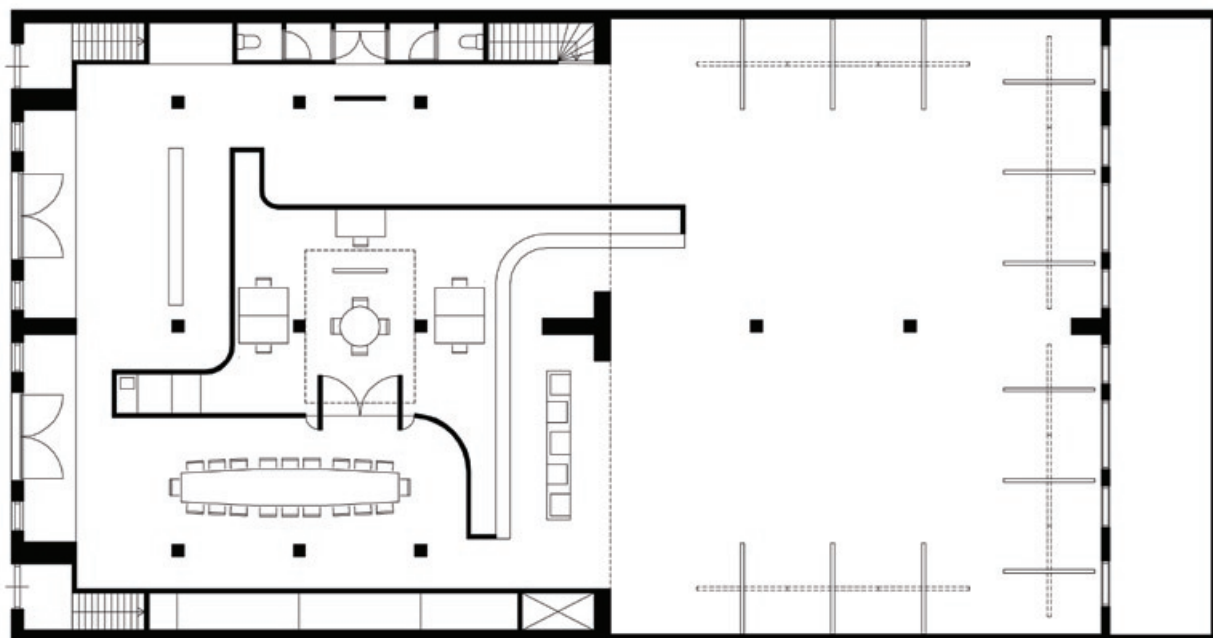


Till far in the 20th century the Jordaan district was the slum area of Amsterdam. In between the densely packed houses all sorts of businesses, shops and craftsmen were established. The structure of the neighbourhood and many buildings still testify the district's history of mixed dwelling and work. This building on the Looiersgracht ('Tanner's canal'), which until recently housed a cardboard manufacturer, is no exception. Behind the façade with two large gates a large open space can be found, with rows of evenly spaced masonry columns carrying the storeys above. This space has been extended into the back of the plot with a simple and light workshop with a sawtooth roof. The new proprietors want to convert the building into a gallery for contemporary and experimental art. Our proposal is to accommodate office space, archive and pantry in a single volume. Because

of its particular shape this volume organizes the surrounding space by defining distinct yet interconnected rooms: the reception, a library and a presentation space. The latter can be used for small lectures or separate, small expositions, which seen from the street through one of the gates, intrigues passers-by. The open floor plan of the almost free-span extension is maintained. In combination with the pleasant daylight from its sawtooth roof, this space is ideal for differing arrangements of artworks of various dimensions. The positioning of the space-defining volume on the street side of the building dramatically charges the entrance to this hall. Yet this intervention leaves the factory as a whole to be perceptible, with its characteristic dimensions, construction and historical traces of use.







## Credits

<i>Client</i>	tegenboschvanvreden
<i>Size</i>	752 m <sup>2</sup>
<i>Project architect</i>	Heike Löhmann
<i>Contributor</i>	Arthur Galdeij