

auditorium building University College · Ghent







## Two new auditoria for the healthcare department of the University College Ghent (Belgium)

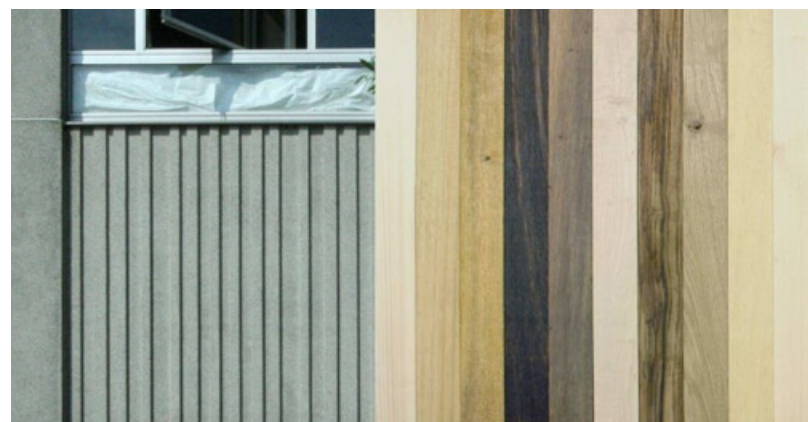
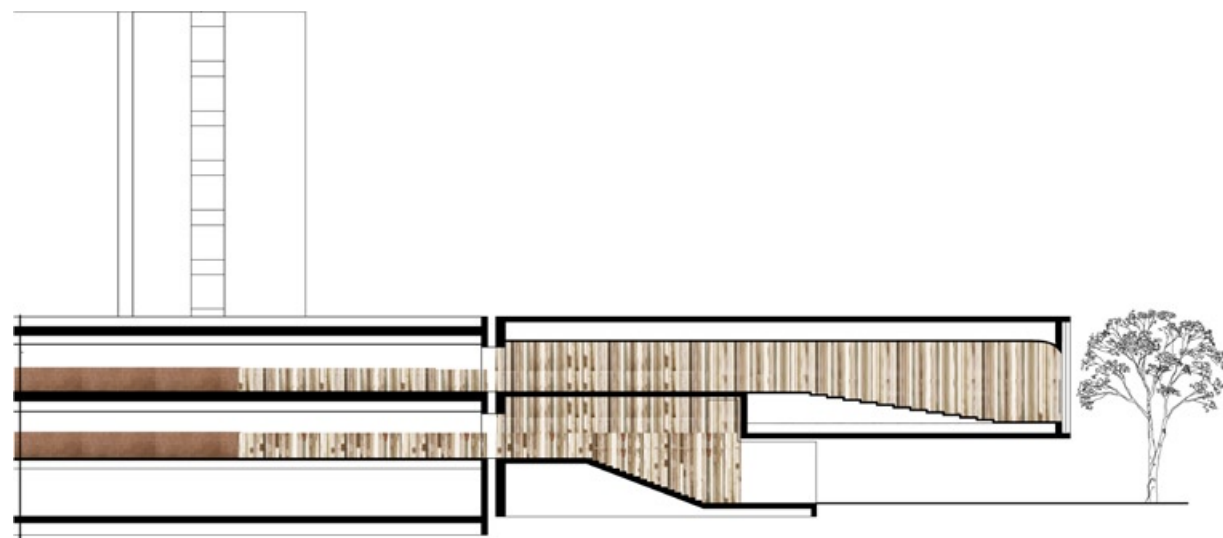
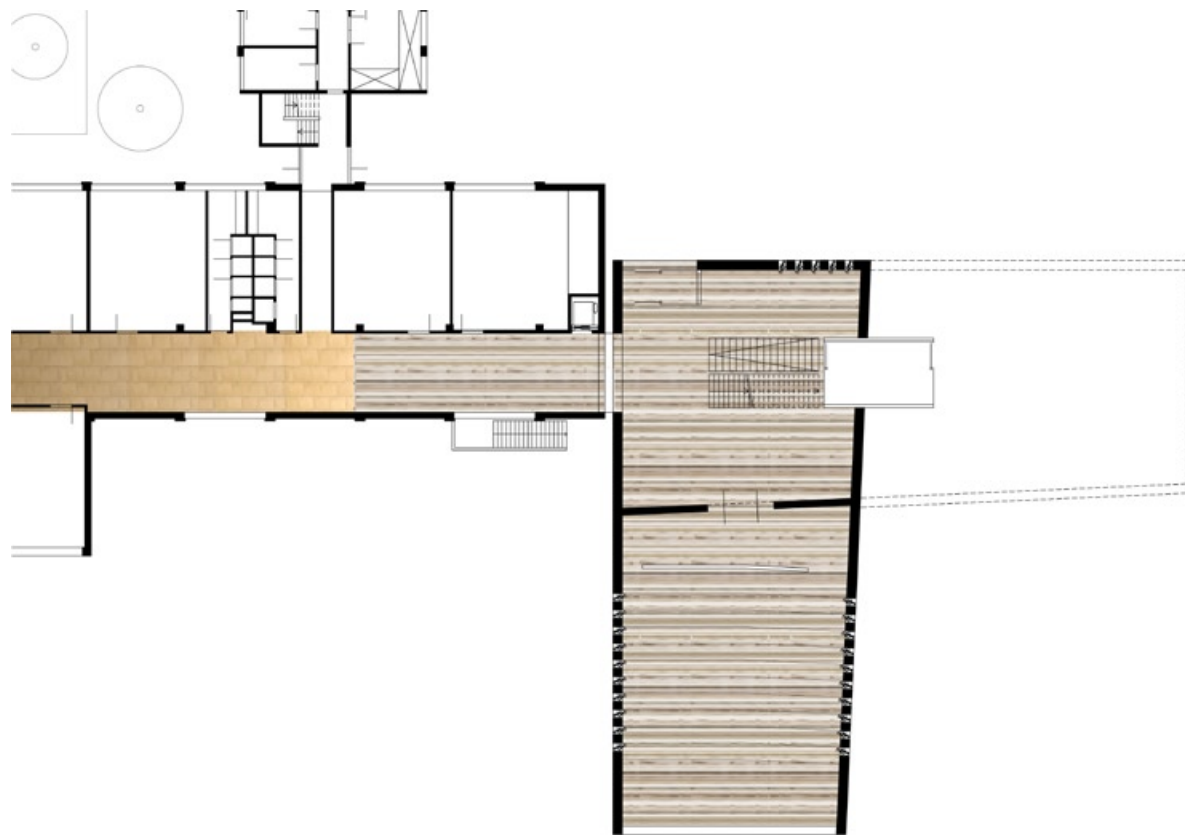
The current department building accommodates educational and research facilities as well as student housing. Its brutalist materialisation and 1970s formal language starkly contrasts with the neighbouring small-scale social housing from the first half of the 20th century.

This proposal extends the department with an architectonic mark providing the campus a stronger identity, while simultaneously integrating the extension with the existing structure. The perpendicular configuration of the two lecture rooms offers sightlines in all directions and intensifies the relation between the interior and the park. The configuration of the volumes supports a landscape design based on 'rooms' as the structuring unit. This plan aims to improve the embedding of the campus within its context by adjusting the scale of the outdoor spaces around the building to that of the public spaces in the neighbourhood.

At the pivot point of the two protruding auditoria, a foyer forms the link between the existing building and the lecture rooms, while the cantilevering top auditorium allows for future extensions to be joined to the foyer as well. In the auditoria, the tapered shape of the space in coherence with the oval configuration of the chairs lend the room an intimate atmosphere and direct relation between teacher and students, despite their generous capacity of 150 seats. The extension is naturally and sustainably materialised with a mix of wooden boards, old and new, lending the building a lively and unique identity strong enough to enter into a dialogue with the dominant concrete. In addition to a design for the extension, Löhmann's also proposed a strategy for the gradual transformation of the existing interiors, with the new auditorium as the starting point of this process.







## Credits

LÖHMANN'S Architecture · Urban + Industrial Design was one of the five architecture offices invited to participate in this competition within the framework of the Open Oproep, organised by the Flemish government architect.

### *Client*

Hogeschool Gent

### *Gross floor area*

1.030 m<sup>2</sup>

### *Project architect*

Heike Löhmann

### *In collaboration with*

Holger Gladys

### *Collaborators*

Marcus Kempers

### *Structural eng. & cost consultant*

Artex · Dendermonde

### *Acoustic consultant*

Daidalos Peutz Bouwfysisch Ingenieursbureau · Leuven

### *Visualisation*

Marcello Blasco · België

Gabriëls Webb · Amsterdam